



Instructions for Phoenix Gravity New Millennium Edition™ Filter Elements



Parts List

Parts shown for illustration only and are not to scale.

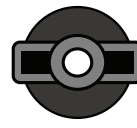
(A) Phoenix Gravity New Millennium Edition™ Filter Elements (Set of 2)



(B) PrimeEasy™ Universal Primer



(C) Sealing Washers (Set of 2)



(D) Wing Nuts (Set of 2)



(E) Red Food Coloring (2 Vials)

1. Prime Your Phoenix Gravity New Millennium Edition™ Filter Elements (3 Methods Shown Below)

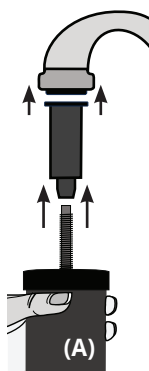
Priming uses water to displace air out of the elements' pores, ensuring that water can flow freely. **Elements will not operate properly if they are not primed.** We recommend setting up your system on a countertop or other waterproof surface. Any process dust should wash away during the priming process.

Before You Get Started:

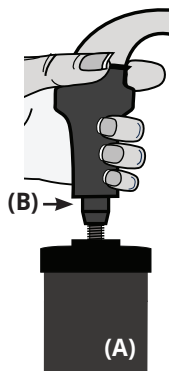
- Wash hands before priming and installing elements to reduce the chances of contaminating the system's components.
- Keep all parts, instructions and original packaging in the event that your elements need to be returned to the manufacturer. We recommend writing the elements' installation date on the box to serve as a reminder as to when elements need replacement.
- Determine the best priming method based on your faucet's design and where you will be priming the elements.

Priming Method 1: Using the Included PrimeEasy™ Universal Primer

The PrimeEasy™ Universal Primer fits both larger and smaller styles of faucets.



1. Make sure faucet head and inside of primer are dry—this will give you a better grip when handling the primer, and helps create the best seal possible when priming. Attach the PrimeEasy™ Universal Primer (B) to faucet, stretching out the larger end of primer and pulling it up and over faucet's spout as far as possible.



2. Hold the element (A) in one hand, and push element's stem up into primer as far as it will go.

3. With one hand, hold primer on faucet head and slowly turn on water. Use only cold water.

4. Gradually increase water pressure, keeping pressure flow low.

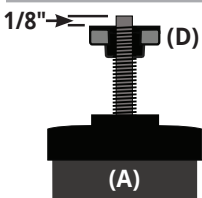
Tip: It's better to keep pressure low and wait for filter to prime, rather than turning up water too high, which could result in water leaking or spraying out where primer seals onto faucet.



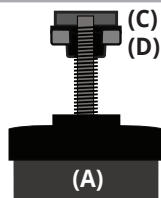
5. Once water appears as sweat on the outside of filter, continue running water and rub outside of element with hand for **1 minute** until element appears saturated and water runs clear. **Water may be discolored at first, as excess media exits element.**

The element is now primed and ready for installation. Repeat steps 1-5 for remaining elements.

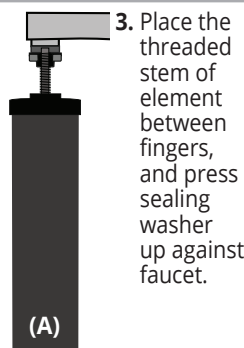
Priming Method 2: Using Element's Sealing Washer



1. Remove wing nut (D) and sealing washer (C) from element. Turn wing nut upside down (flat part facing up) and screw onto stem until the top of wing nut reaches the top of stem's threads (about 1/8" from top of stem).



2. Place sealing washer (C) on top of wing nut (D). Top of sealing washer should be slightly higher than top of the stem.



3. Place the threaded stem of element between fingers, and press sealing washer up against faucet.



4. Slowly turn on cold water (gradually increasing water pressure) while holding element and sealing washer firmly against faucet to create a seal, allowing water to saturate element.



5. Once water appears as sweat on the outside of filter, continue running water and rub outside of element with hand for **1 minute** until element appears saturated and water runs clear. **Water may be discolored at first, as excess media exits element.**

The element is now primed and ready for installation. Repeat steps 1-5 for remaining elements.

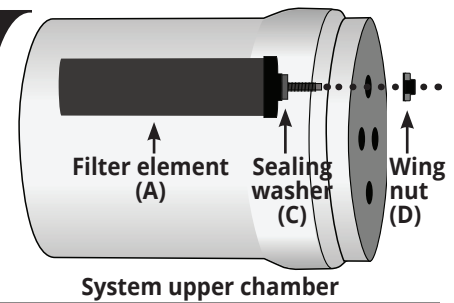
Tip: Your Phoenix Gravity New Millennium Edition™ Filter Elements will be wet after priming them. We recommend placing your primed elements in a clean bowl or sink while priming and installing your other remaining filter elements.

Priming Method 3: Off-Grid Alternative Priming Option (Without Faucet)

Elements may also be primed using a bottle of filtered water (note: use only clean water). This method works best with flexible/collapsible bottles 16 oz. or larger. Remove lid from bottle, and attach wider end of PrimeEasy™ Universal Primer onto top of bottle as far as possible. Insert element's stem into smaller end of primer (turning upside down so element is on flat surface with primer and bottle attached above it, preferably in a sink or other area that can get wet). Squeeze water from bottle into filter until element is saturated and beads of water appear on filter. Repeat process if necessary. **Note:** filters will continue to operate as intended as long as they are saturated with water.

2. Install Primed Elements In Your System

1. Remove wing nut from threaded stem while leaving sealing washer on element.
2. Place threaded stem, with sealing washer attached, into the hole in the interior base of upper chamber.
3. Secure element in the base of the chamber by screwing wing nut onto threaded mount until hand-tight. **Caution: hand tighten only. Over-tightening wing nut can strip the nut's threads, which could cause the system to leak.** Repeat these 3 steps for remaining elements.
4. With elements (and blocking plugs, if needed) in place, carefully place upper chamber onto lower chamber. Your system is ready to use.



3. Assembly Verification* (Red Food Coloring Test)

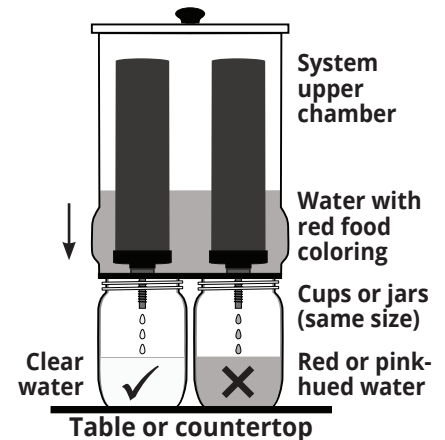
This simple test verifies that your system has been assembled correctly, and that there are no internal leaks in your system. We recommend this test be done after the first assembly of this system, after removal or replacement of filter elements, or the first use after drying and storing the elements for an extended period of time. **Ensure that you do not have fluoride reduction elements installed in the system when performing this test.**

1. Add up to 1/8 teaspoon (10 drops) of the included red food coloring (listed as part "E" on the first page of these instructions) or artificial **red** food coloring (such as McCormick's) for every gallon that your water filter system can hold into the upper chamber. Acceptable red food coloring ingredients include water, propylene glycol, FD&C Red 40 and FD&C Red 3, and propylparaben. **Avoid using food coloring that is not red, or contains citric acid, sodium benzoate or natural ingredients such as beet juice, turmeric, etc. Using organic food colorings will result in a false failed test (stating that your system is not sealed correctly).**
2. Place a cup under spigot and drain water. If dispensed water does not have a red or pink hue, this indicates that the elements are sealed and system has been assembled correctly.

***Note: This test is meant to confirm that the system was assembled as intended.**

If water drained from system has a red or pink hue during the assembly verification test, repeat the procedure again in this manner to determine the source of the leak:

1. Place the upper system chamber only (with filter elements installed) on top of same-sized cups or jars, each positioned so that an element can drip water into it. This will help you identify which blocking plug or element may be leaking.
2. Fill upper chamber with water and red food coloring as directed above.
3. Allow system to filter water. Check the color of water expelled from the elements.
If water color is clear, your system is ready to use. If red coloring is still present, reinstall the element(s) or blocking plug(s) where leaking occurs and re-run test.
4. If system continues to fail the test, contact our Customer Service department for assistance.



Precautions and Storage

Use of softened water or salt water can clog the filter's pores and will void your warranty.

Never allow wet filter elements to freeze. Exposure to freezing temperatures can expand the water into ice, which may damage the elements and cause them to crack or break. Allowing elements to freeze will void your warranty.

If you are going to be leaving the system unattended for 4-15 days and want to reduce the necessity of re-priming the elements, remove the elements from your system and place them in a sealable plastic bag (gallon-size or larger) while elements are still damp (this allows the elements to stay wet, making priming unnecessary). Then, place the elements in your refrigerator where they will not freeze. When ready, thoroughly rinse elements under cold water, then reinstall them in your system.

For longer-term storage, we recommend completely drying the elements first. Ensure they are bone-dry (zero moisture) before storing them long-term. Shake excess water from elements, then air-dry by leaving them on a windowsill or other sunny location for 1-3 days until completely dry.

Once elements are bone-dry (zero moisture), store them in a sealable plastic bag (gallon-size or larger)—this prevents elements from absorbing odors. When you are ready to re-use your elements, clean them by scrubbing the outside with a stiff brush or a Scotch-Brite® pad under cold running water. Then re-prime the elements before putting them back in your system.

New Millennium Concepts, Ltd. Limited Warranty

New Millennium Concepts, Ltd. (NMCL) warrants Phoenix Gravity New Millennium Edition Filter Elements against defects in materials or workmanship under normal consumer use for one year from the date of receipt by the original purchaser, as shown on the original invoice, when purchased from an Authorized NMCL Dealer. This warranty is non-transferable and applies only to the original retail purchaser. **At its discretion, New Millennium Concepts, Ltd. will replace defective filter elements during the warranty period.** The warranty does not cover issues due to misuse, abuse, accident, neglect, alteration, or use for unintended purposes, nor does it cover normal wear and tear or incidental/consequential damages to property. To claim warranty service, you must provide a dated original receipt and discuss warranty claim with NMCL Customer Service. Customer is responsible for troubleshooting as directed by NMCL Customer Service to validate the need of warranty replacements and may be required to provide images and additional information before a return authorization is provided. Returned filter elements for warranty must have a Return Authorization Code included with the return. Customer is responsible for the shipping costs to return original filter elements. This warranty is exclusive, replacing all other warranties, express or implied, including merchantability or fitness for a particular purpose. It applies only to Phoenix Gravity New Millennium Edition Filter Elements manufactured or distributed by New Millennium Concepts, Ltd. and sold through its Authorized Dealers. Disputes are governed by Texas, USA law.

Questions About Installing or Using Your Filter Elements?

Phone: (888) 803-4438 Monday - Friday 9AM - 5PM CST Holiday hours may vary.